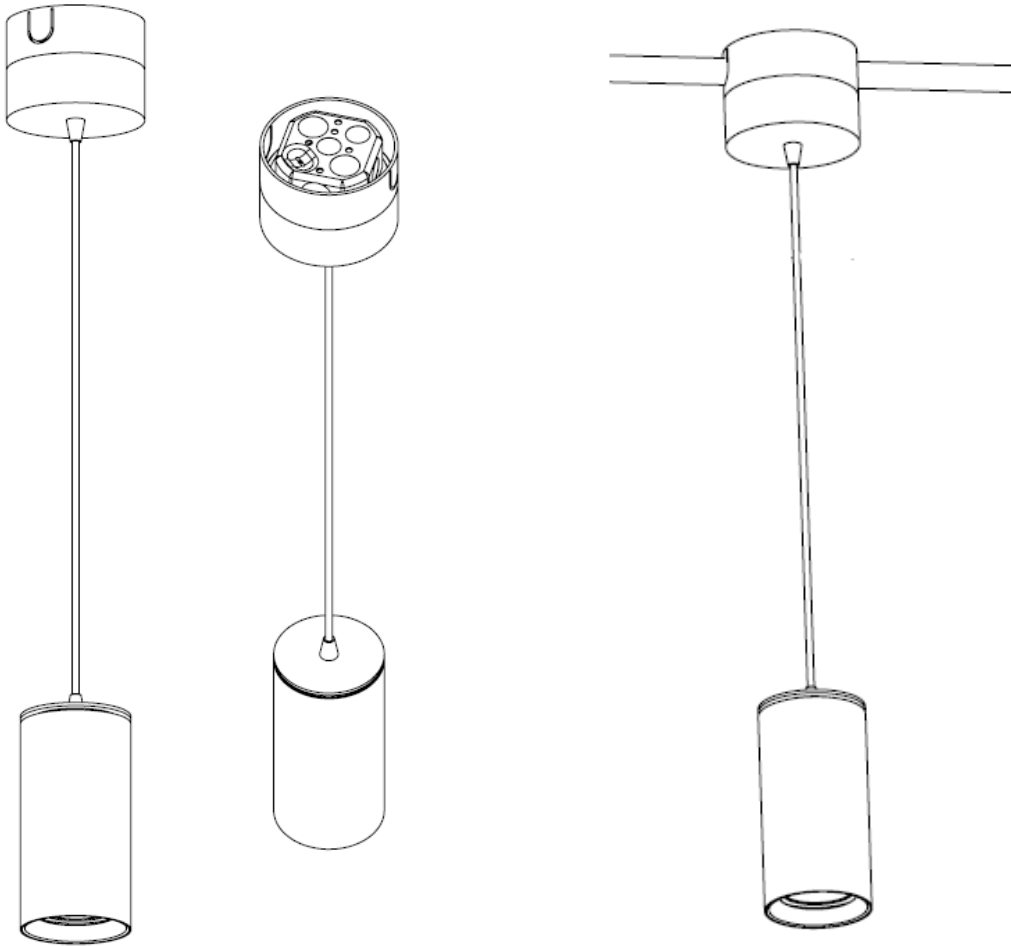


## BONGO PENDANT CONCRETE MOUNT INSTALLATION INSTRUCTIONS

---

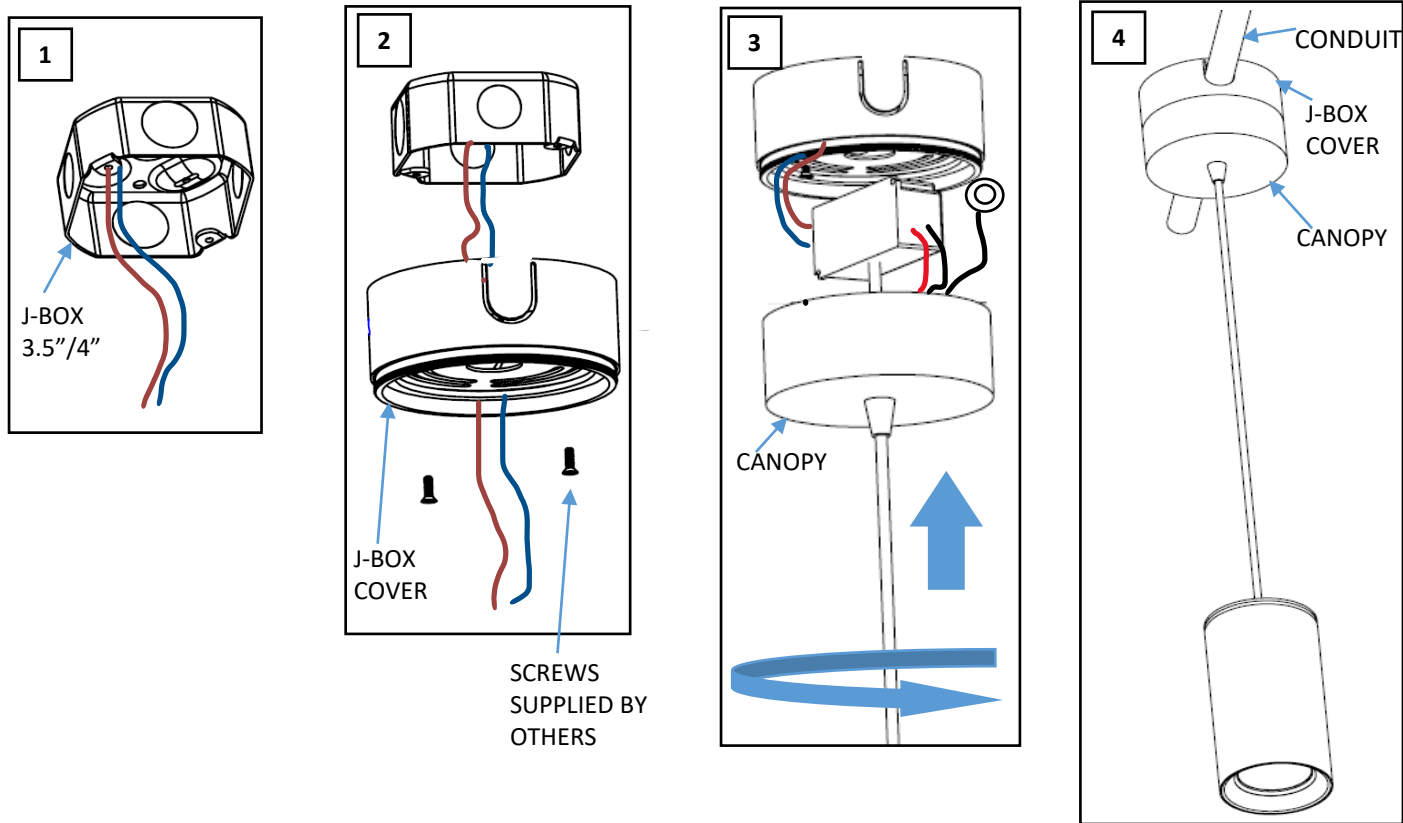


---

**WARNING - RISK OF FIRE AND ELECTRICAL SHOCK. FIXTURE MUST BE INSTALLED BY A QUALIFIED ELECTRICIAN ONLY. FIXTURE IS INTENDED FOR INSTALLATION IN ACCORDANCE WITH THE NATIONAL ELECTRICAL CODE, LOCAL AND FEDERAL SPECIFICATIONS. DISCONNECT POWER AT ELECTRICAL PANEL BEFORE SERVICING. CONNECTION OF LUMINAIRE TO POWERED DRIVER WILL RESULT IN PERMANENT DAMAGE TO THE LED AND VOIDED PRODUCT WARRANTY. RETAIN THESE INSTRUCTIONS FOR MAINTENANCE REFERENCE.**

---

# FIXTURE INSTALLATION



1. J-BOX 3.5" OR 4" NEEDS TO BE PRIOR INSTALLED ON THE CONCRETE CEILING SURFACE MOUNTED (FIGURE 1)
2. UNSCREW THE J-BOX COVER FROM THE CANOPY, KNOCKOUT THE REQUIRED CUT-OUT FROM THE J-BOX COVER FOR THE CONDUIT, PULL OUT THE WIRES OF THE MAIN LINE BLU AND BROWN FROM THE J-BOX COVER AND SCREW THE J-BOX COVER ON THE J-BOX USING 2 SCREWS #8-32 x 0.75" LONG SUPPLIED BY OTHERS. (FIGURE 2). THE TOP PART OF THE J-BOX COVER WILL STAY IN CONTACT WITH CONCRETE CEILING.
3. CONNECT THE TETHER TO THE J-BOX COVER FOR THE SAFETY OF THE PENDANT. CONNECT THE WIRES OF HIGH VOLTAGE FROM DRIVER TO MAIN LINE, BLUE WITH BLUE AND BROWN WITH BROWN AND THREAD THE CANOPY ON THE J-BOX COVER ALREADY INSTALLED. THE DRIVER WILL STAY INSIDE OF THE CANOPY (FIGURE 3)
4. CONNECT THE CONDUIT TO THE J-BOX COVER (FIGURE 4)