

THEA 1 INSTALLATION INSTRUCTION



WARNING - RISK OF FIRE AND ELECTRICAL SHOCK. FIXTURE MUST BE INSTALLED BY A QUALIFIED ELECTRICIAN ONLY. FIXTURE IS INTENDED FOR INSTALLATION IN ACCORDANCE WITH THE NATIONAL ELECTRICAL CODE, LOCAL AND FEDERAL SPECIFICATIONS. DISCONNECT POWER AT ELECTRICAL PANEL BEFORE SERVICING.

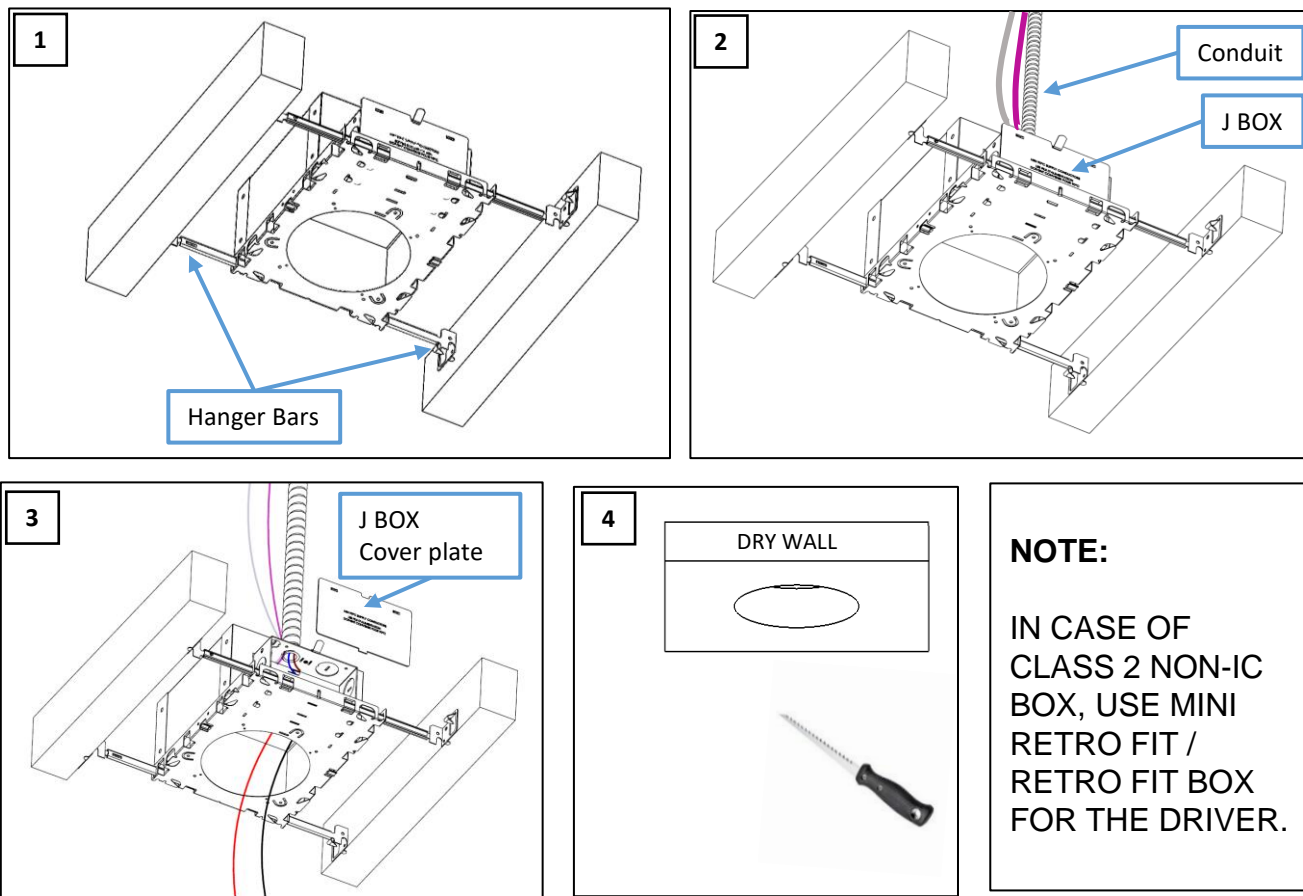
CONNECTION OF LUMINAIRE TO POWERED DRIVER WILL RESULT IN PERMANENT DAMAGE TO THE LED AND VOIDED PRODUCT WARRANTY.

RETAIN THESE INSTRUCTIONS FOR MAINTENANCE REFERENCE.

CUTOUT TABLE

FIXTURE	CUTOUT
THEA 1	2" (51 mm) DIAMETER

IC / NON-IC BOX INSTALLATION (NEW CONSTRUCTION)



NOTE:

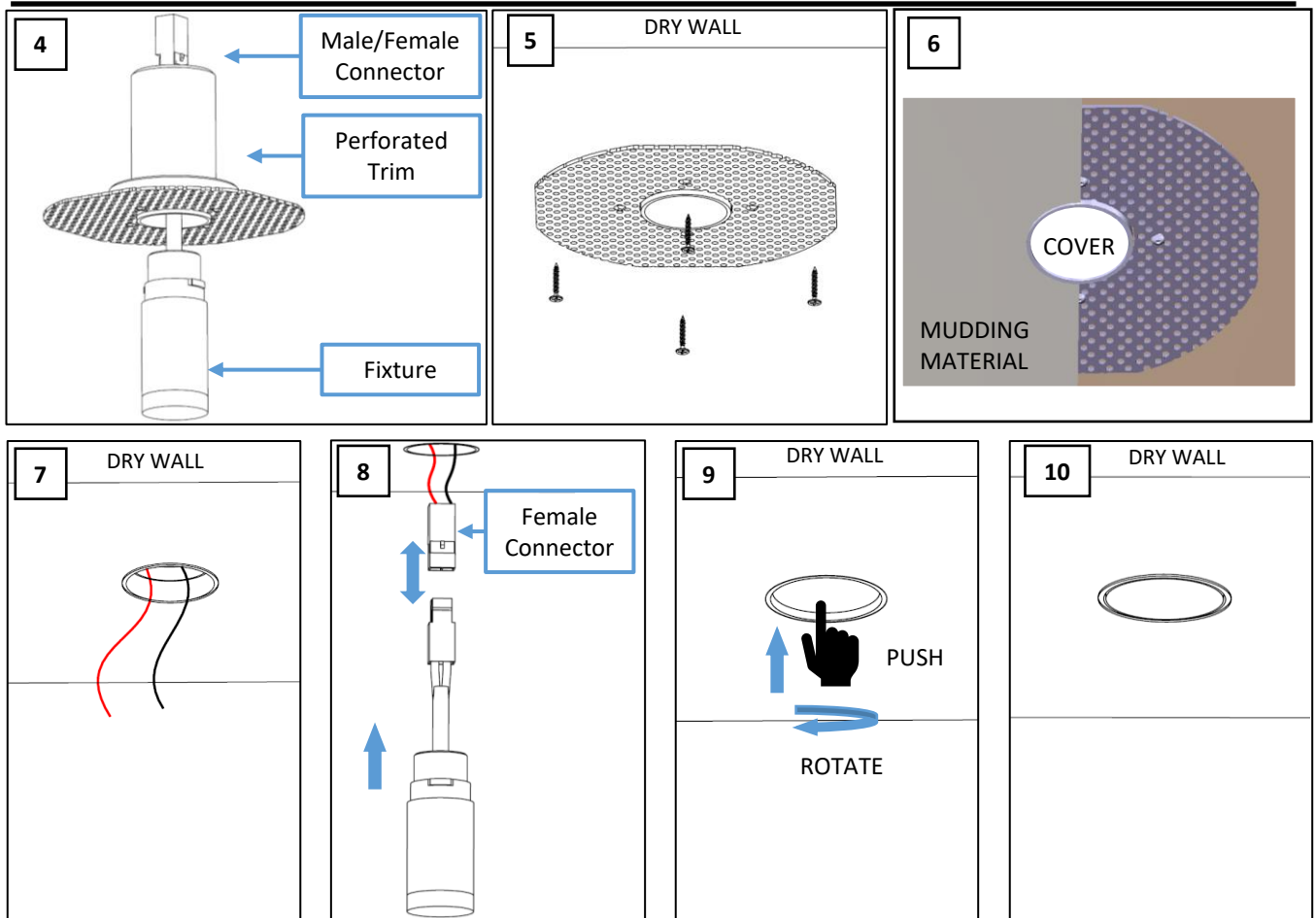
IN CASE OF
CLASS 2 NON-IC
BOX, USE MINI
RETRO FIT /
RETRO FIT BOX
FOR THE DRIVER.

NOTE:

- IN CASE OF ELV, NON-DIM AND BLUETOOTH DRIVER, PURPLE & GRAY WIRES ARE ABSENT.
- RUNNING 0-10V DIMMING WIRES IN THE SAME CONDUIT AS LINE VOLTAGE IS NOT RECOMMENDED. THEY NEED TO BE RAN SEPARATELY OR AT LEAST SEPARATED BY A CONTINUOUS BARRIER.

1. INSTALL IC RATED BOX USING HANGER BARS ABOVE THE CEILING. (FIGURE 1).
2. KNOCK OUT A HOLE IN THE J BOX AND RUN THE CONDUIT THROUGH IT. (FIGURE 2)
3. OPEN THE J BOX COVER PLATE AND PLACE THE DRIVER INSIDE THE J BOX AND CONNECT TO THE POWER LINES PULLED THROUGH THE CONDUIT. (FIGURE 3)
4. IF IT IS A 0-10V DRIVER, CONNECT THE WIRE (PURPLE AND GRAY) TO THE DIMMER MODULE. AND RUN THE LOW VOLTAGE WIRE (RED & BLACK) THROUGH THE IC BOX, OUT THROUGH THE OPENING BEFORE INSTALLING THE DRYWALL CEILING. (FIGURE 3)
5. CUT A HOLE IN THE DRYWALL USING THE CUT-OUT TABLE AS A REFERENCE. (FIGURE 4)

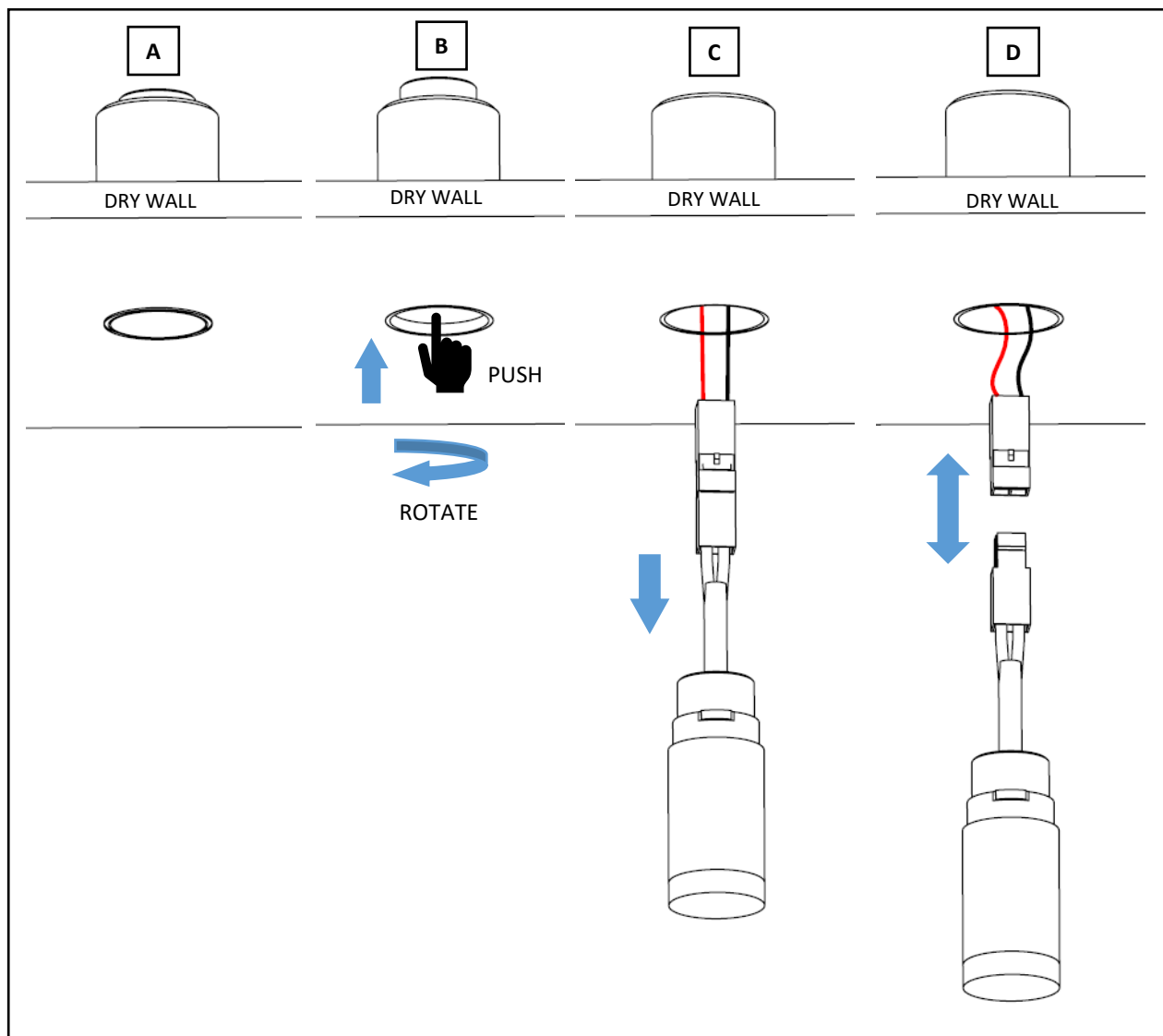
FIXTURE INSTALLATION



NOTE: DRIVER HAS TO BE REMOTE

1. PUT THE PERFORATED TRIM INSIDE THE HOLE. INSTALL MUD RING USING FIBERGLASS TAPE ON THE EDGES OF THE PERFORATED SHEET. SECURE THE MUD RING WITH 4 NAIL IN THE HOLES OF PERFORATED SHEET. (FIGURE 5)
2. COVER THE TRIM OPENING AND APPLY MUDDING MATERIAL OVER THE PERFORATED SHEET AND AROUND THE TRIM COLLAR. (FIGURE 6)
3. PULL POWER LINES FROM THE REMOTE DRIVER THROUGH THE TRIM. (FIGURE 7)
4. CONNECT THE LOW VOLTAGE POWER SUPPLY TO THE FIXTURE.USING THE MALE/ FEMALE CONNECTOR. RED TO RED, BLACK TO BLACK. PUSH THE FIXTURE IN THE TRIM, MAKE SURE ALL THE WIRES ARE UP IN THE CEILING. (FIGURE 8)
5. TO SECURE THE FIXTURE, PUSH AND ROTATE SO IT LATCHES IN THE TRIM. (FIGURE 9)
6. TURN ON THE POWER SUPPLY. (FIGURE 10)

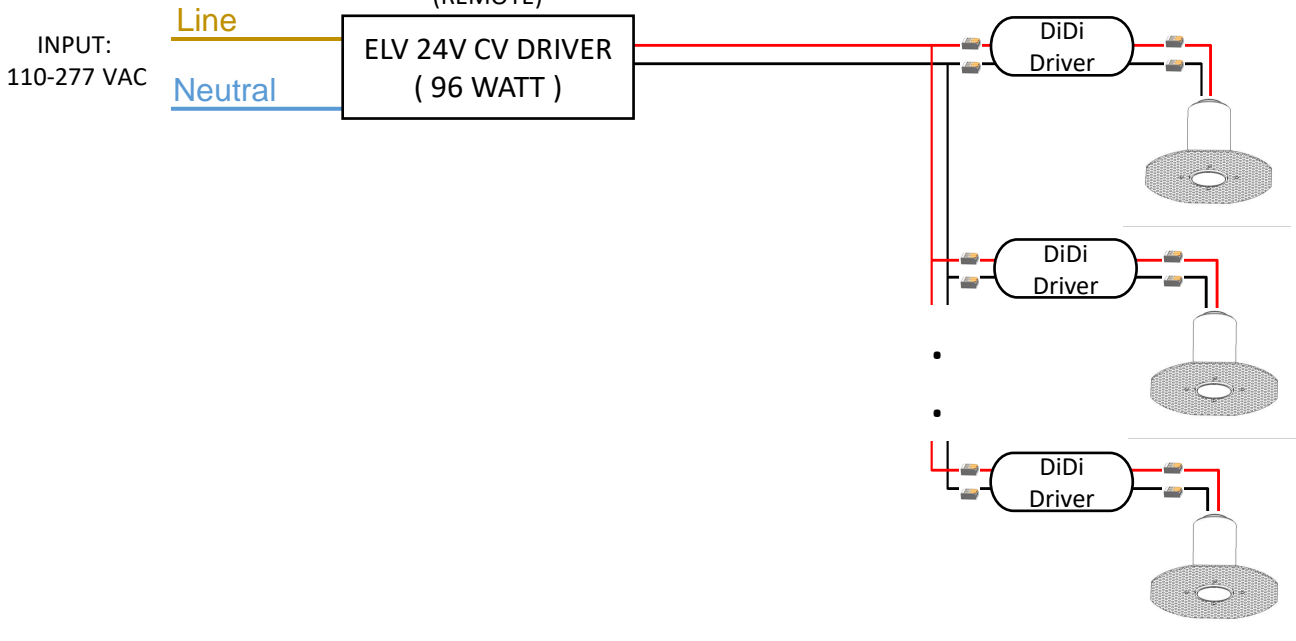
FIXTURE MAINTENANCE



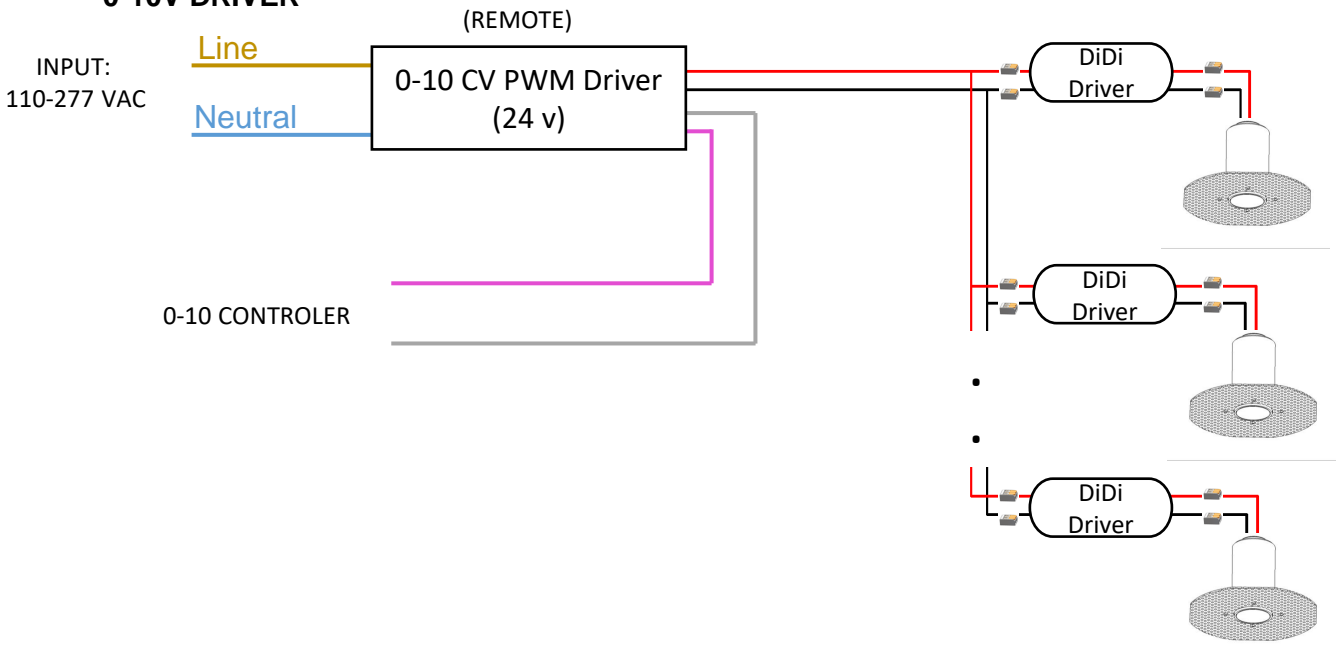
1. SWITCH OFF THE POWER SUPPLY BEFORE MAKING ANY CHANGES IN THE FIXTURE (FIGURE A)
2. PUSH AND ROTATE THE FIXTURE GENTLY SO IT UNLATCHES FROM THE TRIM. (FIGURE B)
3. PULL OUT THE FIXTURE FROM THE TRIM. (FIGURE C)
4. DISCONNECT THE CONNECTORS AND CARRY OUT THE MAINTENANCE. (FIGURE D)
5. CONNECT THE WIRES BACK. PUSH THE FIXTURE IN THE TRIM, MAKE SURE ALL THE WIRES ARE UP IN THE CEILING.
6. TO SECURE THE FIXTURE MAKE SURE TO PUSH AND ROTATE SO IT LATCHES IN THE TRIM.

WIRING DIAGRAM – LOW VOLTAGE

- ELV, NON-DIM, BLUETOOTH DRIVER**
(REMOTE)



- 0-10V DRIVER**

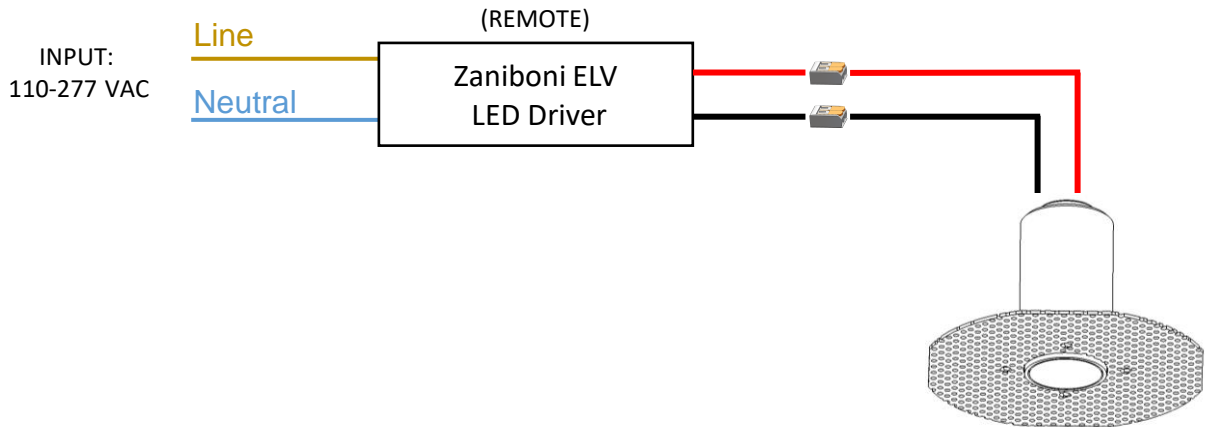


**The manufacturer reserves the right to change or modify the design, dimensions and specifications at anytime without notice. The manufacturer accepts no liability for consequential damage which is occasioned to the user base on the data provided.*

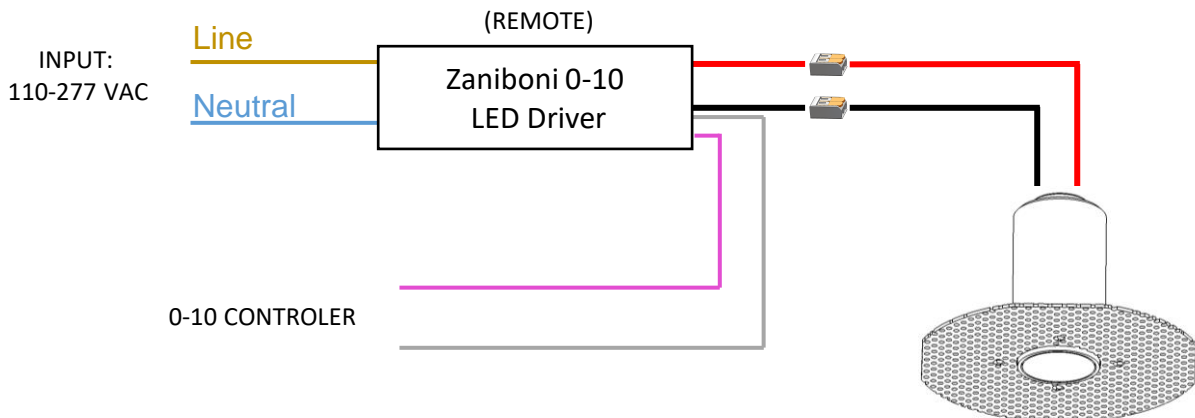
Zaniboni Lighting, 101 N Garden, Ste 230 • Clearwater, FL 33755 • Ph +17272130410 • Fx +17276839720 • www.zanibonilighting.com
Zaniboni Lighting shall not be held liable for any damages arising out of the use or misuse of its products nor any damages arising out of the alteration or modification of the instructed installation of its products.

WIRING DIAGRAM – LINE VOLTAGE

- **ELV, NON-DIM, BLUETOOTH DRIVER**



- **0-10V DRIVER**



**The manufacturer reserves the right to change or modify the design, dimensions and specifications at anytime without notice. The manufacturer accepts no liability for consequential damage which is occasioned to the user base on the data provided.*

Zaniboni Lighting, 101 N Garden, Ste 230 • Clearwater, FL 33755 • Ph +17272130410 • Fx +17276839720 • www.zanibonilighting.com
Zaniboni Lighting shall not be held liable for any damages arising out of the use or misuse of its products nor any damages arising out of the alteration or modification of the instructed installation of its products.