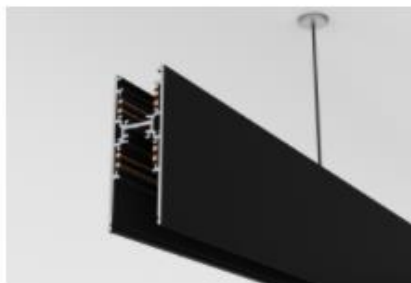


## MINI-TRACK INSTALLATION INSTRUCTIONS



Direct/Indirect Double Mini-Track "D"  
9500-1 / ST9



Direct/Indirect Mini-Track "I"  
9500 / ST2



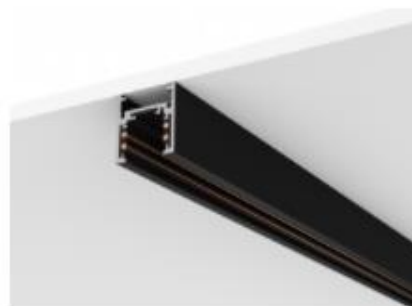
Mini-Track Trimless "T"  
9500 / ST14



Mini-Track Trimless "H"  
9500-1 / ST5



Mini-Track Recessed "R"  
9500-1 / ST8



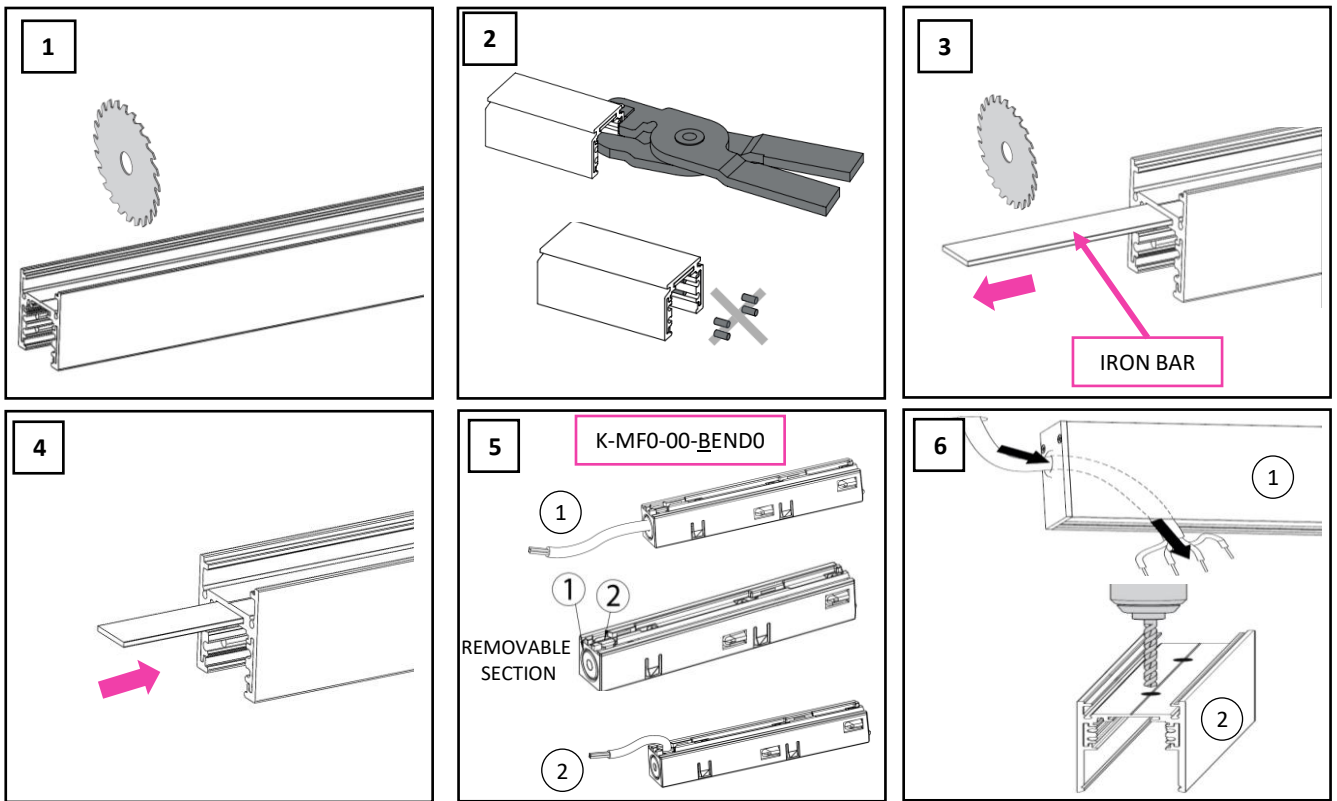
Mini-Track Surface "S"  
9500 / ST6

**WARNING - RISK OF FIRE AND ELECTRICAL SHOCK. FIXTURE MUST BE INSTALLED BY A QUALIFIED ELECTRICIAN ONLY. FIXTURE IS INTENDED FOR INSTALLATION IN ACCORDANCE WITH THE NATIONAL ELECTRICAL CODE, LOCAL AND FEDERAL SPECIFICATIONS. DISCONNECT POWER AT ELECTRICAL PANEL BEFORE SERVICING. RETAIN THESE INSTRUCTIONS FOR MAINTENANCE REFERENCE.**

MATERIALS USED FOR CEILING FIXATION SHOULD CONFORM TO THE RELEVANT BUILDING REGULATIONS. IT IS ESSENTIAL TO COVER THE ENDS OF THE TRACK WITH END COVERS OR PROTECTIVE CAPS.

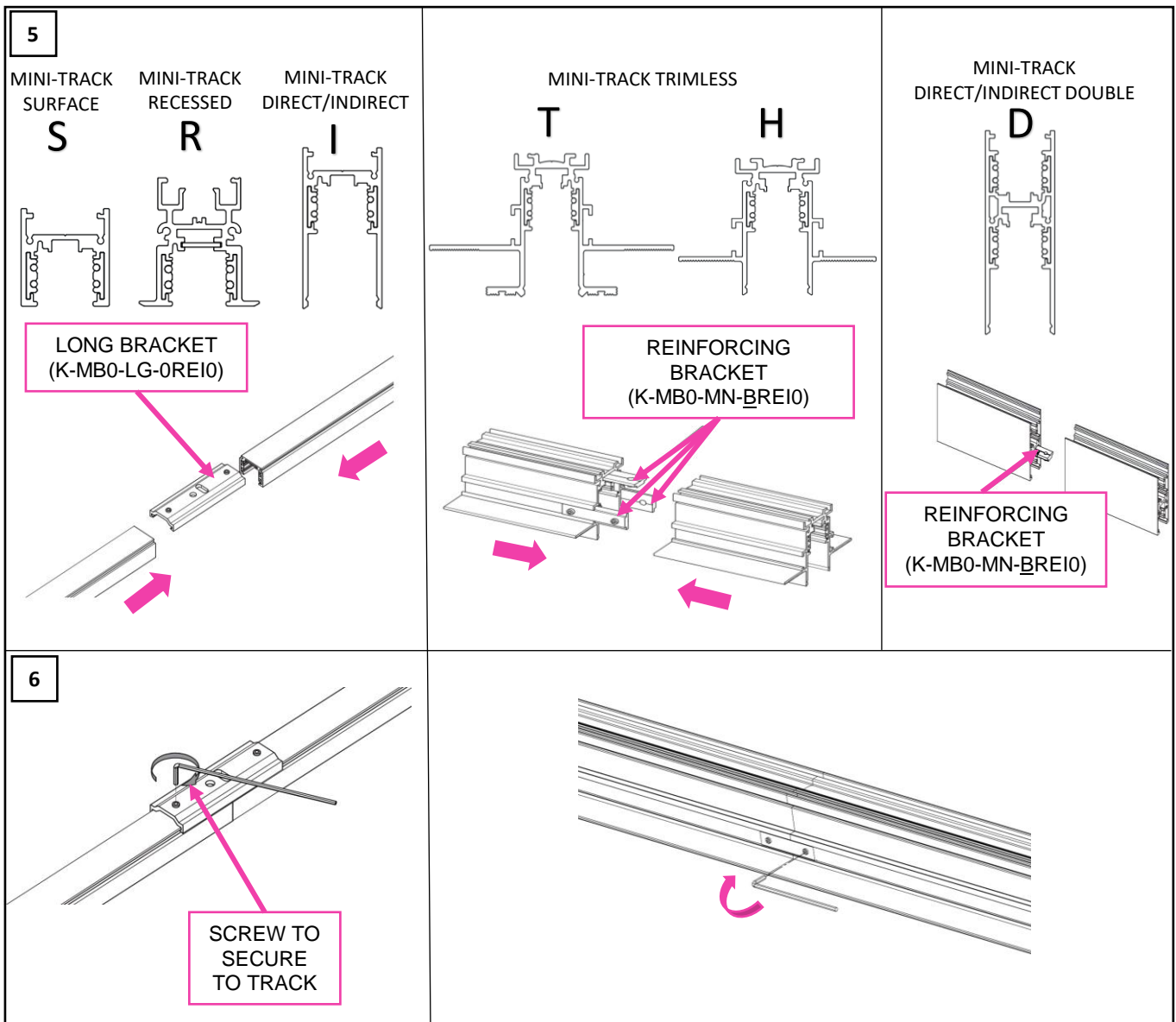
**DO NOT INSTALL THIS TRACK IN WET OR DAMP LOCATIONS.  
DO NOT INSTALL ANY PART OF A TRACK SYSTEM LESS THAN 5' ABOVE THE FLOOR.  
DO NOT INSTALL ANY FIXTURE CLOSER THAN 6" FROM ANY CURTAIN OR SIMILAR COMBUSTIBLE MATERIAL.**

# MINI-TRACK PREPARATION



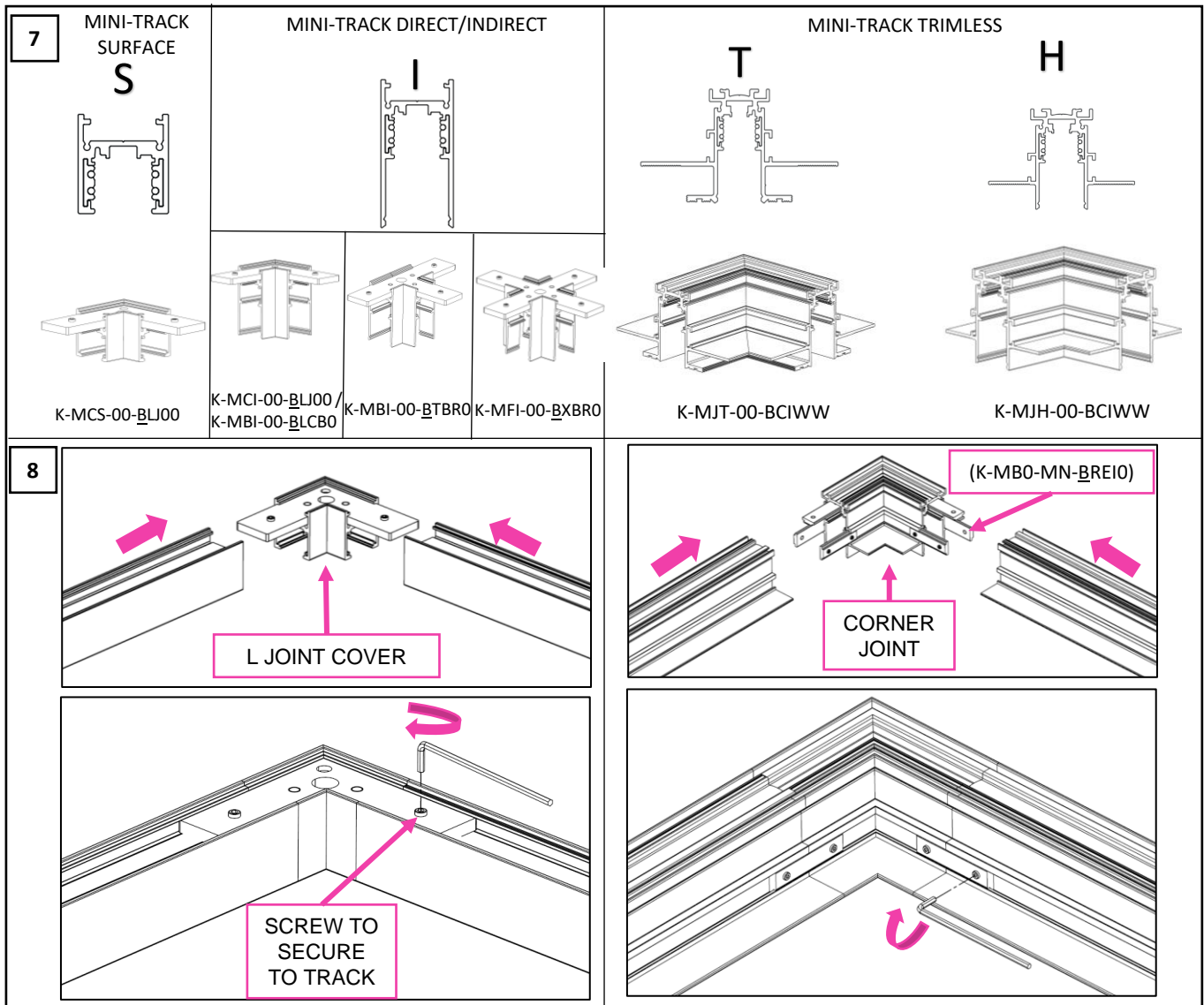
1. CUT THE TRACK TO THE APPROPRIATE LENGTH. DO NOT CUT-OFF LABELED SIDE. REMOVE BURRS AFTER CUTTING. (FIGURE 1)
  - IF A PRE-CUT KIT WAS PURCHASED, THEN THE TRACK HAS ALREADY BEEN CUT TO THE CORRECT LENGTH. SEE THE TRACK LAYOUT DRAWING FOR COMPONENT LOCATION REFERENCE. ALWAYS BEGIN ASSEMBLY WITH THE POWER FEEDER END AND CONNECT EACH TRACK SECTION ON ITS LABELED SIDE FIRST.
2. IF TRACK MUST BE SHORTENED DURING INSTALLATION, AFTER CUTTING IT, USE THE SPECIAL PLIERS TO CUT BACK THE COPPER WIRES OF THE TRACK. MAKE SURE TO ELIMINATE THE PIECES OF COPPER WIRE. (FIGURE 2)
3. PULL OUT THE IRON BAR AND CUT 20mm (0.79") LENGTH FROM IT. SLIDE IT BACK IN THE TRACK PROFILE. (FIGURE 3 & 4)
4. THE FEEDER WILL COME WIRED BY ZANIBONI LIGHTING AS TYPE 1. IF THE WAY OF POWER CONNECTION HAS TO BE CHANGED TO TYPE 2 ON SITE DEPENDING ON THE INSTALLATION LOCATION, APPLY FORCE TO THE REMOVABLE SECTION ② OF THE END FEEDER(K-MF0-00-BENDO) (FIGURE 5) AND REMOVE THE POWER CABLE THROUGH THE RESULTING HOLE.
5. DEPENDING ON THE HOLE USED IN FEEDER, USE AN END CAP WITH A HOLE OR DRILL A HOLE ON THE TRACK TO PASS THE CABLE. (FIGURE 6)

# MINI-TRACK LINE JOINT INSTALLATION



5. USE THE LONG BRACKET (K-MB0-LG-0REI0) OR REINFORCING BRACKET (K-MB0-MN-BREI0) TO ASSEMBLE TRACK PER PREDETERMINED LAYOUT. (FIGURE 5)
6. SLIDE THE TRACK IN TO THE BRACKET AND SECURE IT BY SCREWING USING AN ALLEN KEY. (FIGURE 6)

# MINI-TRACK ANGLE JOINT INSTALLATION



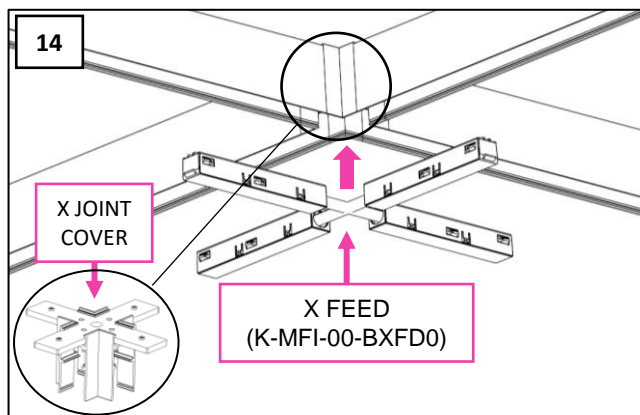
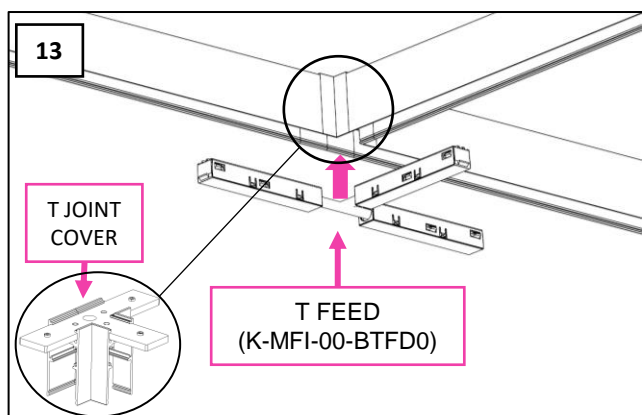
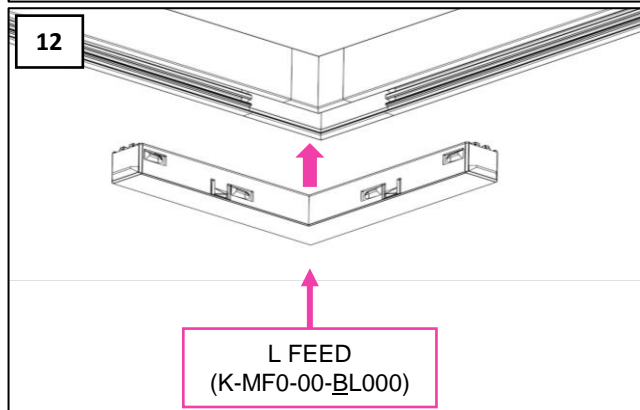
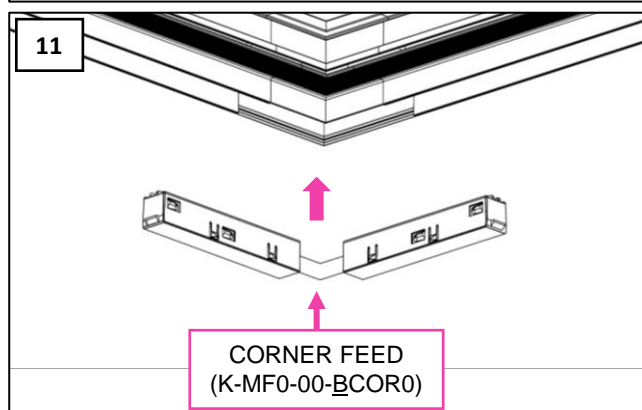
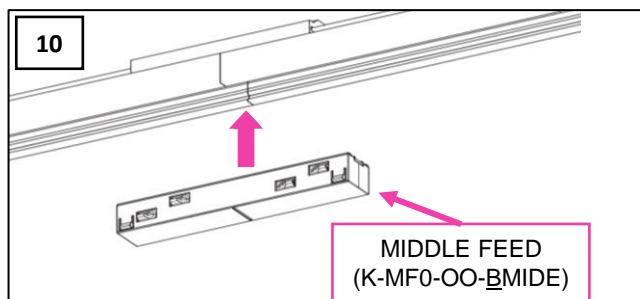
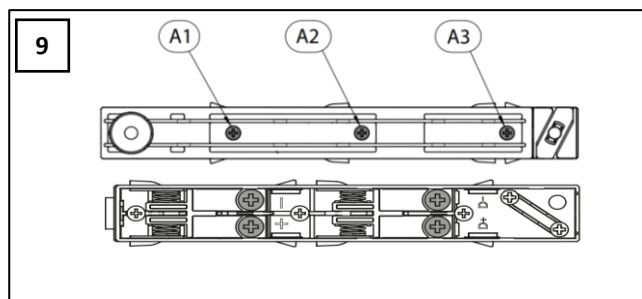
## NOTE:

- CORNER JOINT ( K-MJT-00-BCECW ) & ( K-MJT-00-BCICW ) IS USED WHEN CHANGING THE PLANE FOR MINI-TRACK "T"
- CORNER JOINT ( K-MJH-00-BCECW ) & ( K-MJH-00-BCICW ) IS USED WHEN CHANGING THE PLANE FOR MINI-TRACK "H"  
(CHANGING PLANE MEANS MOVING FROM CEILING TO WALL OR WALL TO WALL OR WALL TO CEILING)

- USE THE L JOINT COVER OR CORNER JOINT DEPENDING ON THE TYPE OF TRACKS. USE THE REINFORCING BRACKET (K-MB0-MN-BREI0) WHERE NEEDED, TO ASSEMBLE THE TRACK PER PREDETERMINED LAYOUT. (FIGURE 7)
- SLIDE THE TRACK IN TO THE L BRACKET OR THE REINFORCING BRACKET AND SECURE IT BY SCREWING USING AN ALLEN KEY. (FIGURE 8)
- TO INSTALL T ( K-MBI-00-BTBRO ) AND X ( K-MFI-00-BXBR0 ) JOINT COVER, REFER TO L JOINT COVER STEPS.

Zaniboni Lighting, 101 N Garden, Ste 230 • Clearwater, FL 33755 - Ph +17272130410 • Fx +17276839720 • [www.zanibonilighting.com](http://www.zanibonilighting.com)  
 Zaniboni Lighting shall not be held liable for any damages arising out of the use or misuse of its products nor any damages arising out of the alteration or modification of the instructed installation of its product.

# MINI-TRACK FEED INSTALLATION



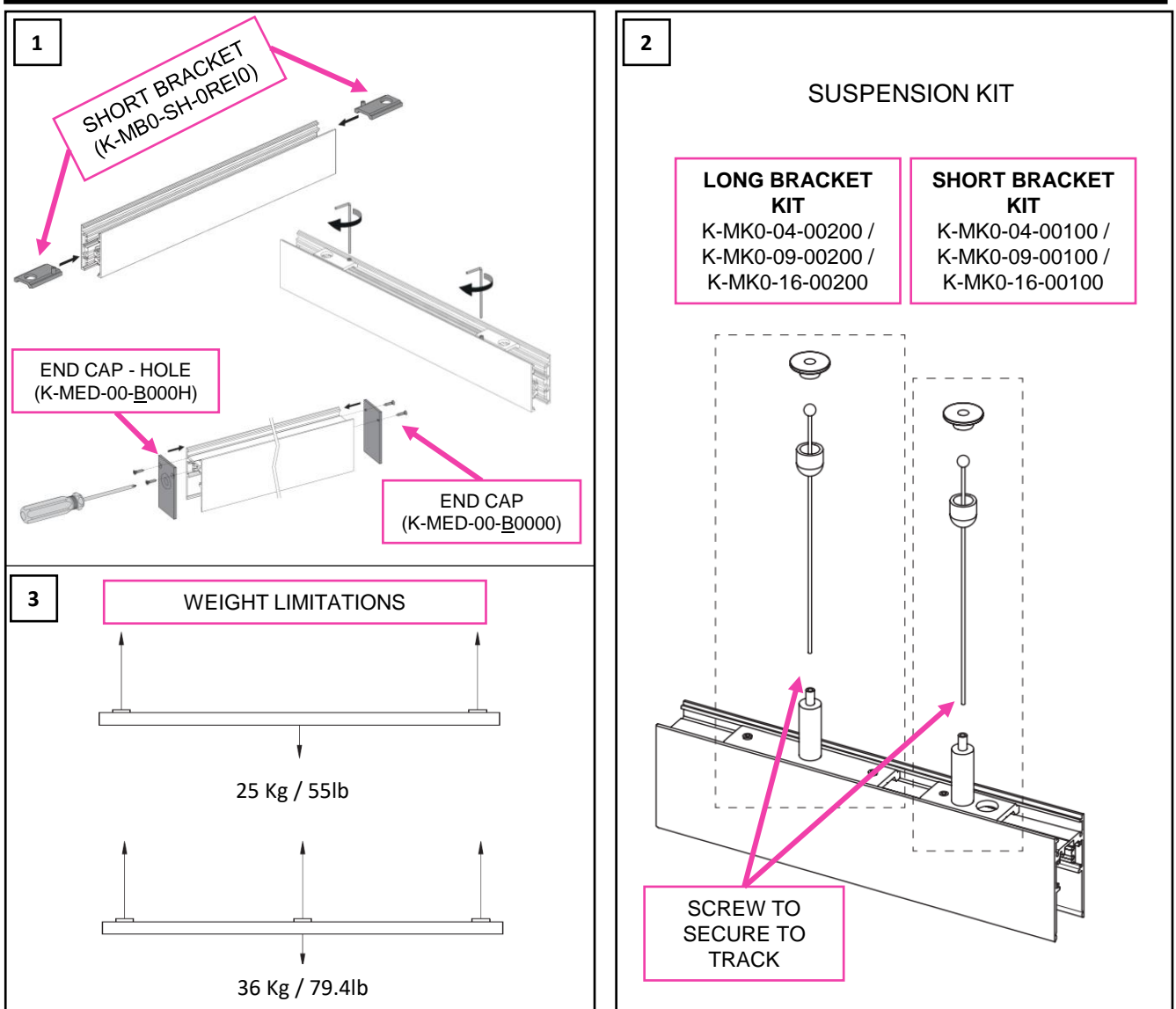
## NOTE:

- T FEED (K-MFI-00-BTFD0) AND X FEED (K-MFI-00-BXFD0) ARE USED WITH T ( K-MBI-00-BTBRO ) AND X ( K-MFI-00-BXBR0 ) JOINT COVER. **(ONLY AVAILABLE FOR DIRECT / INDIRECT MINI-TRACK "I")**
- MINI-TRACK TRIMLESS "T" AND "H" CAN ONLY USE CORNER FEED (K-MF0-00-BCOR0).

## 10. TO INSTALL THE END FEED / MIDDLE FEED / CORNER FEED / L FEED / T FEED / X FEED.

- THE FEEDER WILL COME WIRED FROM ZANIBONI LIGHTING
- INSERT POWER FEED TO THE TRACK. (FIGURE 10-14) MAKE SURE THE FEED IS PERFECTLY FLUSH WITH THE TRACK IN CASE OF MINI-TRACK SURFACE AND RECESSED.
- IN CASE THE WIRING CONNECTION NEEDS TO BE CHANGED ON SITE, REMOVE THE FEED COVER BY UNSCREWING A1-A2-A3 (FIGURE 9) ACCESS THE ELECTRICAL CONTACTS AND MAKE THE PROPER CONNECTION. AFTER MAKING THE CONNECTION PUT THE COVER BACK ON AND TIGHTEN THE SCREWS.

# PENDANT MINI-TRACK INSTALLATION

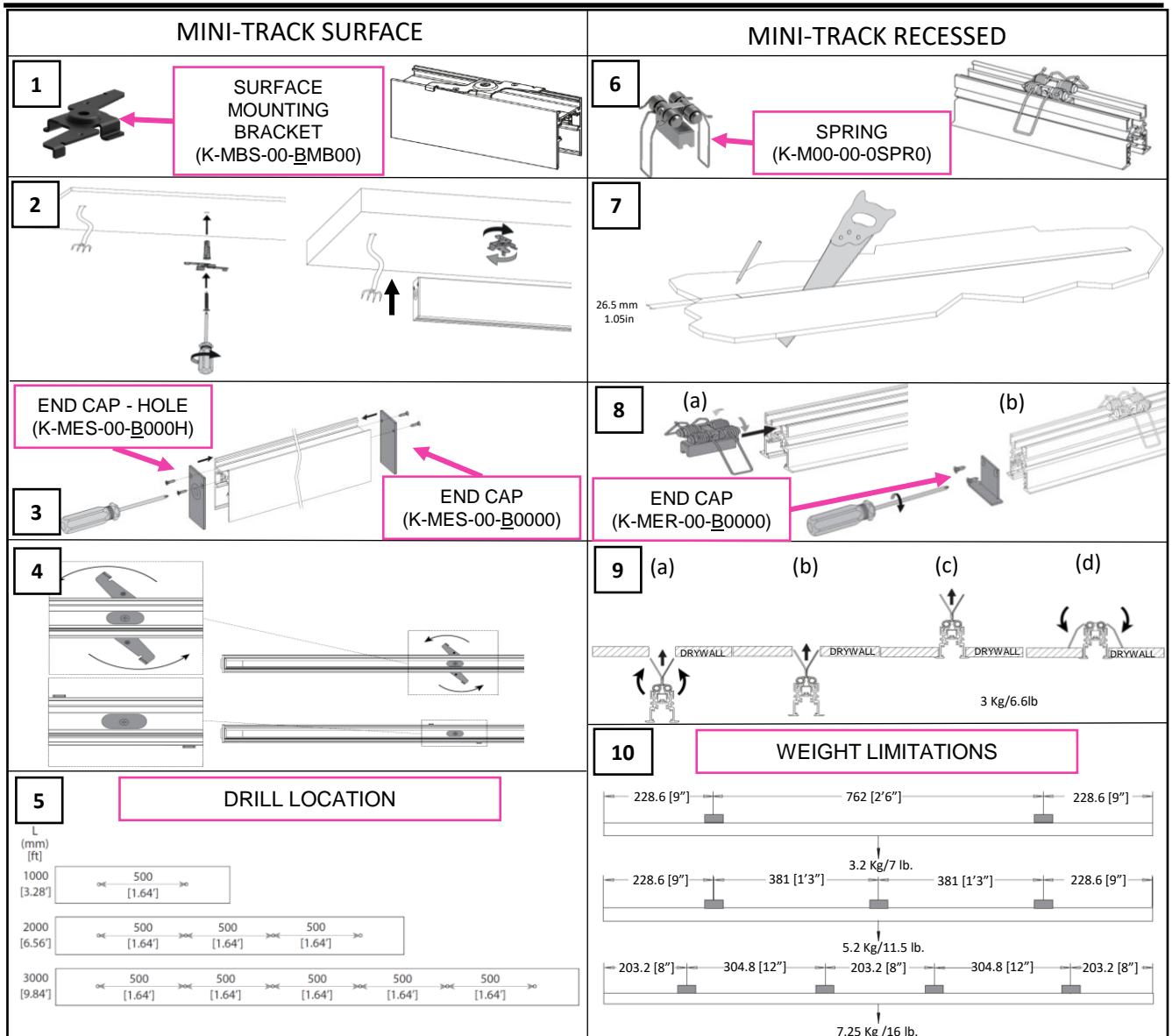


1. SLIDE THE LONG BRACKET (K-MB0-LG-0REIO) OR SHORT BRACKET (K-MB0-SH-0REIO) ONTO THE MINI-TRACK AND SECURE IT BY SCREWING THE SCREWS USING AN ALLEN KEY.(FIGURE 1)
2. ATTACH THE END CAPS TO THE TRACK USING THE SCREWS PROVIDED WITH IT. (FIGURE 1).
3. ATTACH AIRCRAFT CABLE FROM THE SUSPENSION KIT PROVIDED AND FOLLOW THE INSTRUCTION TO FIX THE ROUND HEAD TO THE CEILING (FIGURE 2)
4. HANG THE TRACK TO THE CEILING USING THE BRACKET FROM THE KIT AND PLACE AIRCRAFT CABLE DEPENDING ON THE TOTAL WEIGH OF THE FIXTURE AS SHOWN IN (FIGURE 3).

**NOTE: MINI-TRACK SURFACE AND DIRECT/INDIRECT CAN BE USED FOR PENDENT ASSEMBLY.**



# SURFACE MINI-TRACK INSTALLATION



## 1. MINI-TRACK SURFACE


- MARK THE LOCATION, FOR THE SURFACE MOUNTING BRACKET(K-MBS-00-BMB00) ON THE DRYWALL AS SHOWN ON (FIGURE 5).
- DRILL A HOLE AND SCREW THE SURFACE MOUNTING BRACKET (K-MBS-00-BMB00)TO THE DRYWALL. (FIGURE 2)
- ATTACH THE END CAPS TO THE TRACK USING THE SCREWS PROVIDED WITH IT. (FIGURE 3)
- ATTACH THE MINI-TRACK TO THE MOUNTING BRACKET AND ROTATE AS SHOW IN THE FIGURE TO SECURE THE MINITRACK.(FIGURE 4)

## 2. MINI-TRACK RECESSED

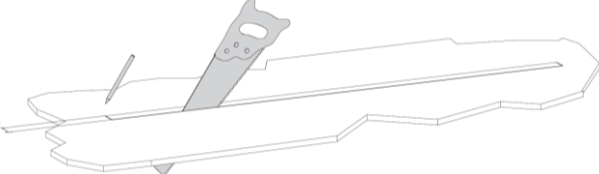
- CUT A SLOT IN THE CEILING OF (26.5 mm X LENGTH OF THE TRACK) (FIGURE 7)
- ATTACH THE SPRING ON TOP OF THE TRACK. (FIGURE 8a)
- "REFER TO" THE WEIGHT LIMITATION CHART FOR PROPER POSITIONING OF THE SPRINGS. THE CHART SHOWS POSITIONING ONLY FOR 4ft LONG TRACK, MAKE APPROPRIATE CHANGES FOR 8ft LONG TRACKS (FIGURE 10)
- ATTACH THE END CAPS TO THE TRACK USING THE SCREWS PROVIDED WITH IT.(FIGURE 8b)
- PULL THE SPRINGS AND INSERT THE TRACK INTO THE SLOT. (FIGURE 9)

# SURFACE MINI-TRACK INSTALLATION

**MINI-TRACK TRIMLESS**

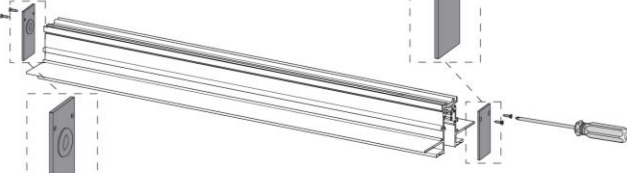
**1**


CUT OUT	
MINI-TRACK TRIMLESS T	MINI-TRACK TRIMLESS H
60 mm/2.35"	56mm/2.2"



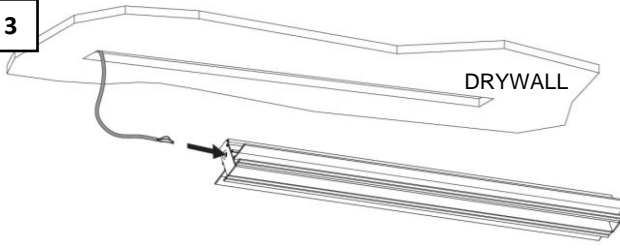
**2**

**END CAP**  
(K-MED-00-B0000)

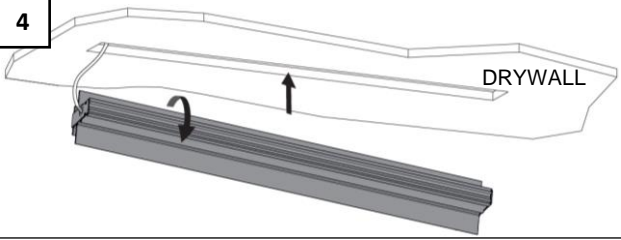


**END CAP - HOLE**  
(K-MED-00-B000H)

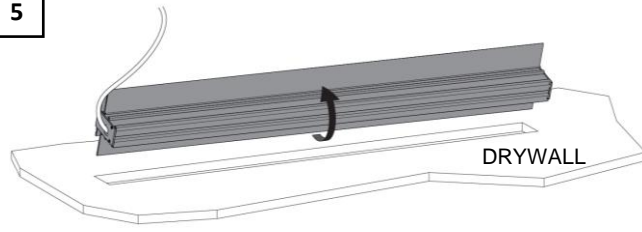
**3**



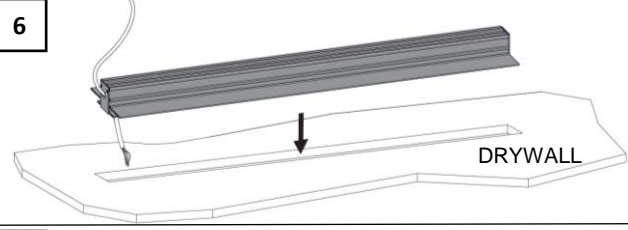
**4**




**5**



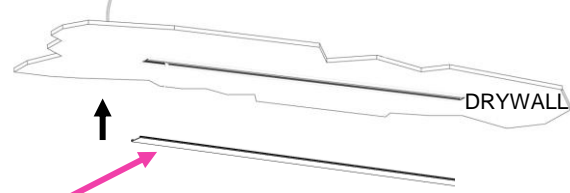
**6**



**7**



**8**



**COVER STRIP**  
(K-MC0-04-BSTAE)  
(K-MC0-08-BSTAE)

### 3. MINI-TRACK TRIMLESS

- CUT OUT THE SLOT ACCORDING TO THE TRACK IN USE. REFER CUT-OUT TABLE FOR WIDTH OF THE SLOT.(FIGURE 1)
- ATTACH THE END CAPS TO THE TRACK USING THE SCREWS PROVIDED WITH IT. (FIGURE 2)
- PLACE THE TRACK INTO THE SLOT AND COVER THE TRACK WITH THE COVER STRIP (K-MC0-04-BSTAE) OR (K-MC0-08-BSTAE) BEFORE SECURING IT WITH MUDDING MATERIAL OR SCREW IT IF NECESSARY. (FIGURE 3-8)

**NOTE: MINI-TRACK SURFACE, RECESSED AND TRIMLESS CAN BE USED FOR SURFACE MOUNTING.**

Zaniboni Lighting, 101 N Garden, Ste 230 • Clearwater, FL 33755 - Ph +17272130410 • Fx +17276839720 • [www.zanibonilighting.com](http://www.zanibonilighting.com)  
 Zaniboni Lighting shall not be held liable for any damages arising out of the use or misuse of its products nor any damages arising out of the alteration or modification of the instructed installation of its product.

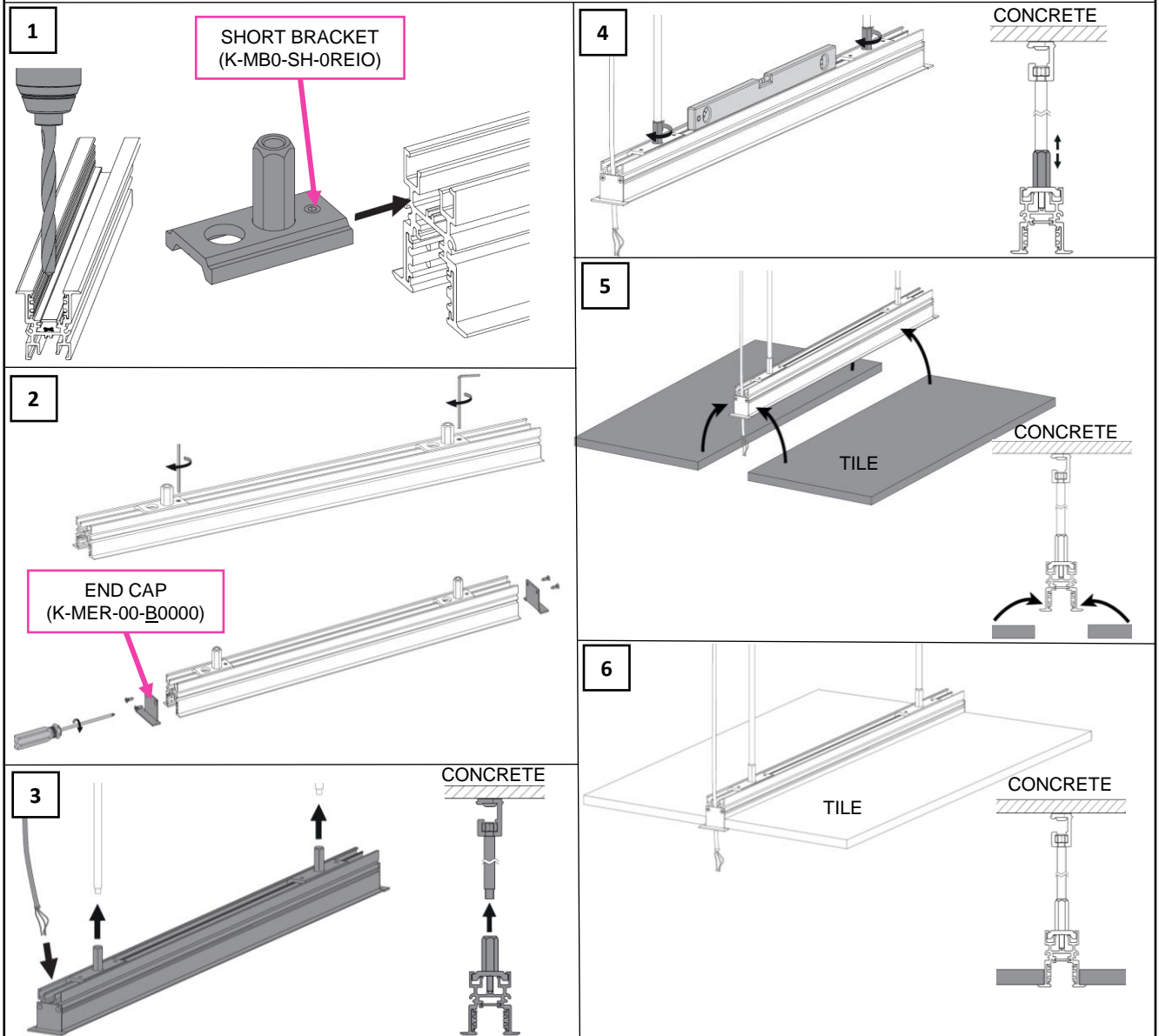
9/22/2021

8



# CEILING TILE MINI-TRACK INSTALLATION

## MINI-TRACK RECESSED

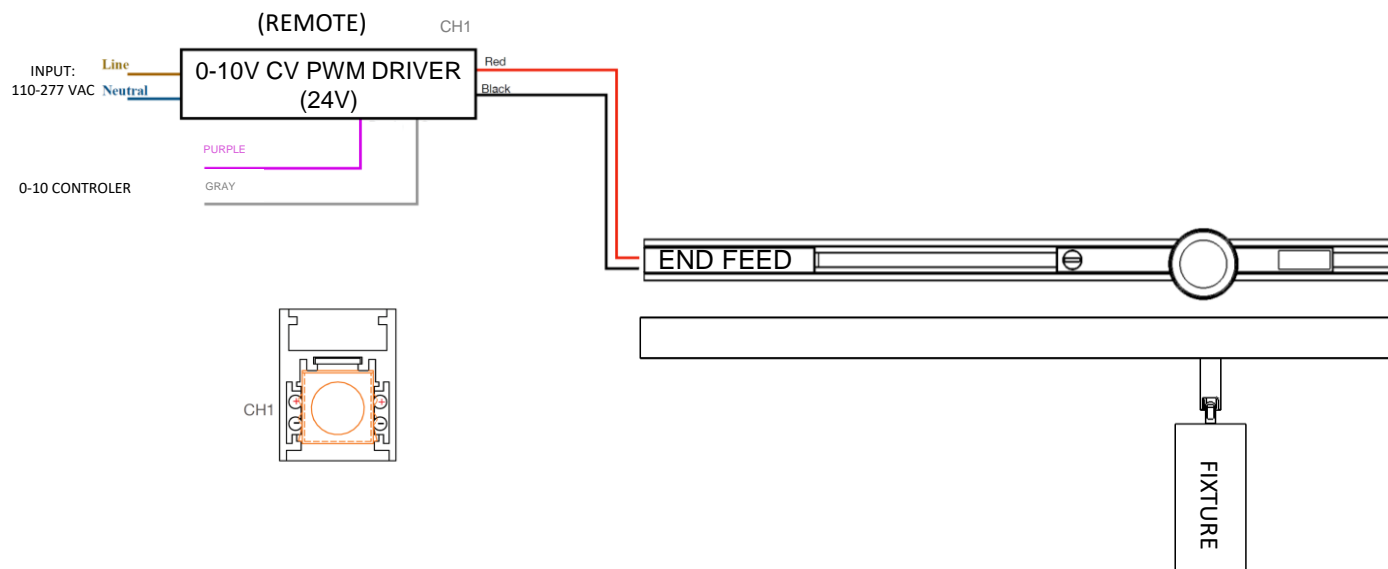


### 1. MINI-TRACK RECESSED

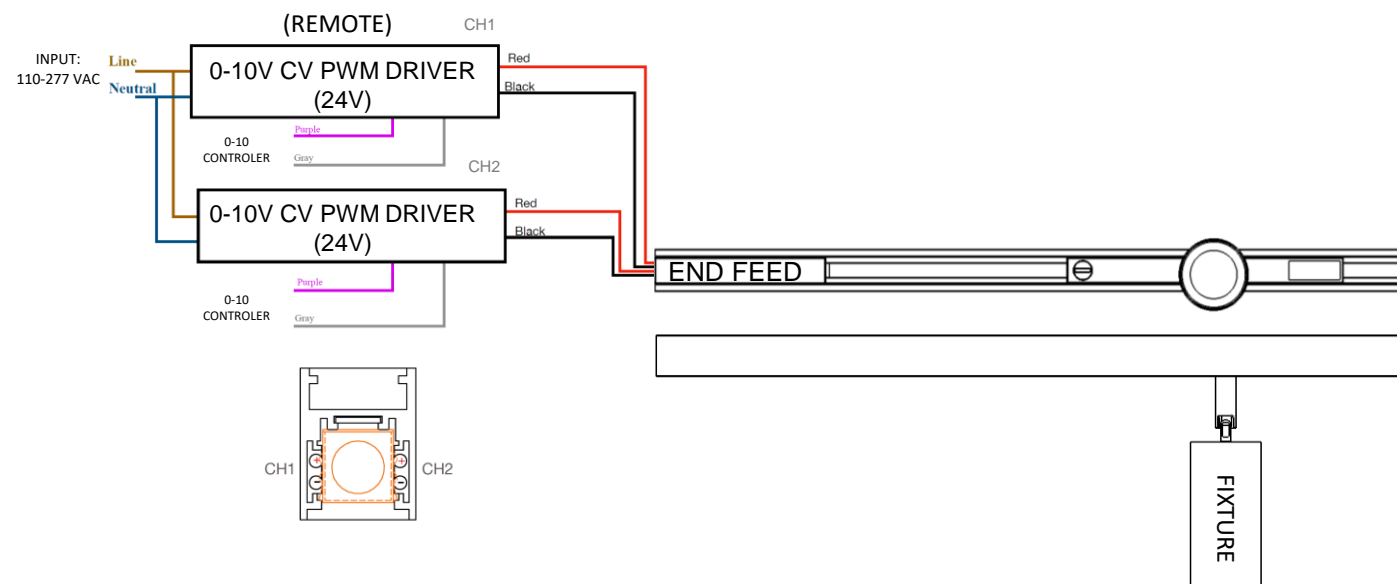
- DRILL THE HOLE IN THE TRACK FOR THE WIRES TO PASS SHOWN IN LATER FIGURES. SLIDE THE SHORT BRACKET (K-MB0-SH-0REIO) IN THE TRACK ( FIGURE 1)
- SECURE THE SHORT BRACKET (K-MB0-SH-0REIO) IN THE TRACK BY SCREWING THE SET SCREW USING AN ALLEN KEY ( FIGURE 2). SCREW THE END CAP ( K-MER-00-B0000) TO THE TRACK AS SHOWN IN ( FIGURE 2).
- ATTACH THE STEM TO THE SHORT BRACKET THAT IS SUSPENDED FROM THE CONCRETE CEILING. ( FIGURE 3)
- CHECK IF THE TRACK IS PROPERLY HORIZONTAL AND THEN PASS THE POWER LINE THROUGH THE HOLE YOU DRILLED IN FIGURE 1. (FIGURE 4)
- PLACE THE TILE ON THE RECESSED TRACK AS SHOWN IN THE (FIGURE 5)
- AFTER FIXING THE TILE IT SHOULD LOOK LIKE (FIGURE 6)

# WIRING DIAGRAM

## • 0-10V, Dali, ONE CIRCUIT



## • 0-10V, Dali, TWO CIRCUIT



### NOTE:

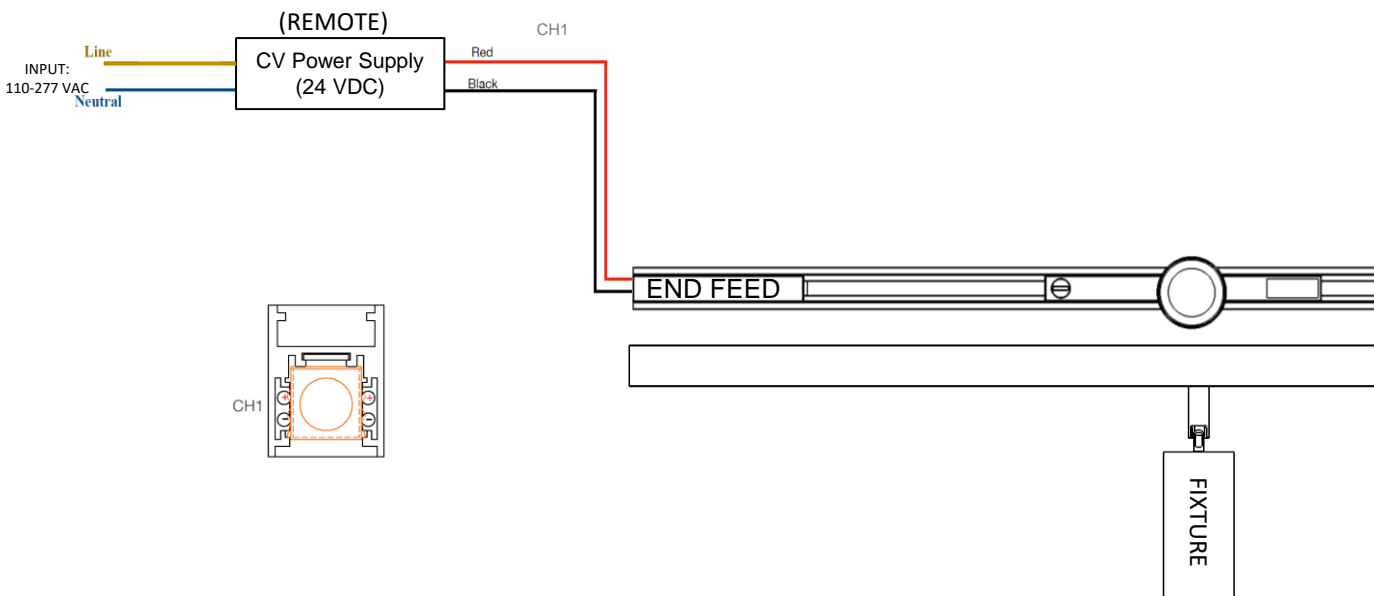
MAXIMUM NUMBER OF THE LIGHTS CAN BE CONNECTED TO EACH CHANNEL DEPEND ON THE WATTAGE OF THE LIGHT. 25 LIGHTS AT 3W, 15 LIGHTS AT 5W, 10 LIGHTS AT 7W AND 8 LIGHTS AT 9W.

*\*The manufacturer reserves the right to change or modify the design, dimensions and specifications at anytime without notice. The manufacturer accepts no liability for consequential damage which is occasioned to the user base on the data provided.*

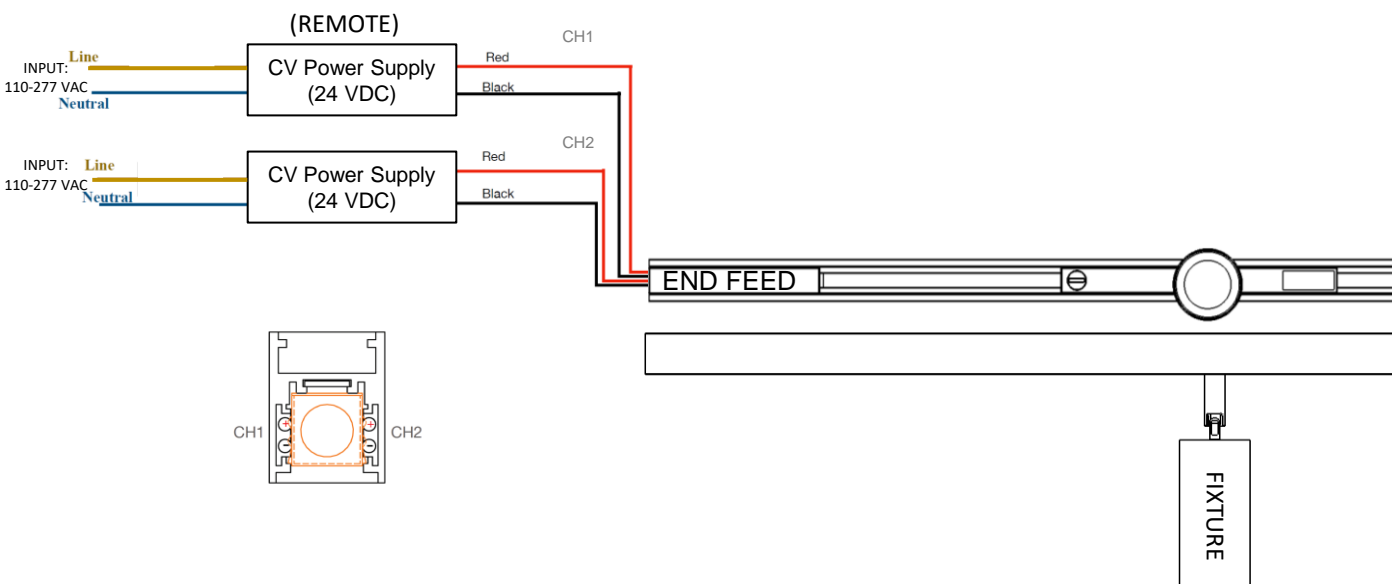
Zaniboni Lighting, 101 N Garden, Ste 230 • Clearwater, FL 33755 - Ph +17272130410 • Fx +17276839720 • [www.zanibonilighting.com](http://www.zanibonilighting.com)  
Zaniboni Lighting shall not be held liable for any damages arising out of the use or misuse of its products nor any damages arising out of the alteration or modification of the instructed installation of its product.

# WIRING DIAGRAM

## • ELV, Bluetooth ONE CIRCUIT



## • ELV, Bluetooth TWO CIRCUIT



### NOTE:

- ELV option available up to 7W.
- MAXIMUM NUMBER OF THE LIGHTS CAN BE CONNECTED TO EACH CHANNEL DEPEND ON THE WATTAGE OF THE LIGHT. 25 LIGHTS AT 3W, 15 LIGHTS AT 5W, 10 LIGHTS AT 7W AND 8 LIGHTS AT 9W.

*\*The manufacturer reserves the right to change or modify the design, dimensions and specifications at anytime without notice. The manufacturer accepts no liability for consequential damage which is occasioned to the user base on the data provided.*

Zaniboni Lighting, 101 N Garden, Ste 230 • Clearwater, FL 33755 - Ph +17272130410 • Fx +17276839720 • [www.zanibonilighting.com](http://www.zanibonilighting.com)  
Zaniboni Lighting shall not be held liable for any damages arising out of the use or misuse of its products nor any damages arising out of the alteration or modification of the instructed installation of its product.